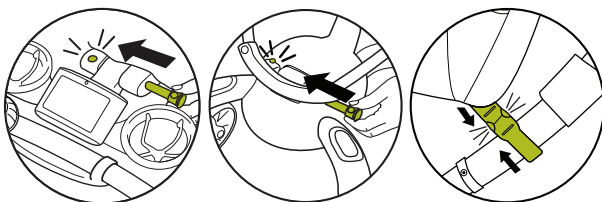




Instruction Manual  
model #4M-006-01

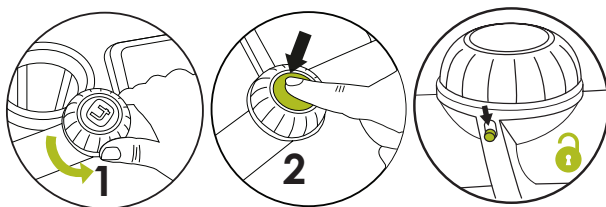
Congratulations on your new Origami™!  
Here are some helpful hints to get you started.

## INSTALL SEAT RING



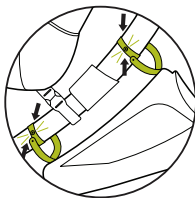
Affix seat ring to stroller frame at handle bar and power pod by sliding pin through holes until it clicks. Buckle the seat restraint strap around the Central Bar.

## POWER FOLD



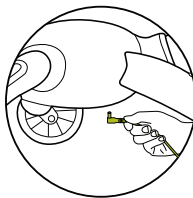
Turn the silver ring counterclockwise until it stops. Let go and press the orange button. Make sure your silver activation ring is unlocked.

## STORAGE BAG



To attach the Storage Bag, snap the bag's straps into place on the Central Bar.

## CHARGE



If needed, use outlet on underside of power pod to plug stroller into the wall. Only use provided charging cable.

## Table of Contents

Chapter 1:	Safety Information. ....	4
Chapter 2:	Seat Ring Safety . ....	7
Chapter 3:	Battery Warning . ....	8
Chapter 4:	Parts Guide . ....	9
Chapter 5:	Installing the Handlebars . ....	11
Chapter 6:	Installing the Seat Ring . ....	12
Chapter 7:	Using Your Origami . ....	14
Chapter 8:	Securing Your Baby. ....	15
Chapter 9:	The LCD . ....	16
Chapter 10:	Lights . ....	17
Chapter 11:	Using the Brakes . ....	17
Chapter 12:	Seat Recline and Storage Bag . ....	18
Chapter 13:	Folding the Stroller Manually. ....	20
Chapter 14:	Charging the Battery Manually . ....	22
Chapter 15:	Maintaining Your Origami . ....	23
Chapter 16:	Troubleshooting. ....	24
Chapter 17:	Warranty . ....	26
Chapter 18:	Registration. ....	26
Chapter 19:	Compliance. ....	27

## Chapter 1: Important Safety Instructions

Please read these instructions carefully before use and keep them for future reference. For your child's safety, please make sure anyone else using the Origami Stroller reads and understands these instructions before using it as well.

Immediately discontinue use of the stroller should it become damaged or broken.

Using a stroller with your child presents inherent safety risks. However, these risks can be minimized with proper use. Please read this manual carefully before using the stroller, as well as the manuals for any Origami accessories you may be using, and follow all safety instructions to avoid injury to yourself or your child.



**WARNING** Use only 4moms® approved accessories specifically designed to work with the model number of your base. Use of unapproved accessories may cause injury or damage your stroller.



**ALWAYS** use the Origami Seat Ring or other 4moms® approved seating accessory. Read all instructions included with 4moms® accessories before use.



**WARNING: NEVER** leave your child unattended. It may be dangerous to leave your child unattended.

Before every use of the Origami, make sure the stroller is fully open and securely latched.

## Chapter 1: Important Safety Instructions

Always stay in control of the Origami's movement. Any wheeled vehicle can roll unpredictably, so always stay within arm's reach of the stroller. Keep the stroller balanced: do not hang heavy objects off the Handlebar, or allow children to play with or hang off the Handlebar. Never allow a child to push the Origami. Use the brake every time you stop to prevent unexpected movement, especially on inclines and when your child is getting into or out of the stroller.



**WARNING** Any load attached to the handle affects the stability of the stroller. Make sure the Origami is stable and still when your child is getting in or out. Always assist your child when he is getting in or out, and hold on to the stroller to make sure it doesn't tip. Always use the brake when stopped.

Be aware of the environment in which you are using the Origami. Do not stroll over obstacles in your path, and be especially careful on uneven, slippery, or unstable terrain, as this may increase the stroller's likelihood of tipping. Make sure your child's arms and legs are inside the stroller before moving, as obstructions striking the stroller could cause injury.

Be careful when using the Origami on a steep incline, as this increases the stroller's likelihood of tipping or rolling away from you. Never use the Origami on stairs or escalators, or in any other environment where you could suddenly lose control of the stroller and cause injury to yourself or others. the storage bag.

## Chapter 1: Important Safety Instructions



### **WARNING**

Use this stroller only for walking. The Origami is not designed for jogging, running, roller skating, or any motion other than an adult's walking pace. Do not let a child push the Origami.



### **WARNING**

Ensure that the stroller latches are engaged before use.

Always use your best judgment when using the Origami. Do not use it in any situation in which you suspect doing so could cause harm to your child, yourself, or anyone around you. Stop using the Origami immediately if you suspect any part is damaged or not working correctly, or if the LCD presents an "error" message, and contact 4moms Customer Service for assistance.



### **AVOID STRANGULATION. DO NOT**

place items with a string around your child's neck, suspend strings from this product, or attach strings to toys.



### **TO AVOID BURNS**

, never put hot liquids in the parent's or child's cup holders.



### **WARNING**

Do not store more than 10 pounds of material in the storage bag. The storage bag is not a seating device. Never allow a child to sit or lay in the storage bag. Do not store more than 1 pound in any of the 4 cupholders or more than 5 pounds in the seat back pockets. Excess weight in any of these areas may create a hazardous, unstable condition.



### **TO AVOID FINGER ENTRAPMENT**

Use care when folding and unfolding the stroller.

## Chapter 2: Seat Ring Safety Instructions



**WARNING** Avoid serious injury from falling or sliding out. Always use restraints and adjust belts to get a snug fit around your child.



**WARNING** This seat unit is not suitable for children under 6 months.

The Origami seat ring is designed for a single child. Do not use for more than one child.

When using the seat ring,  
**NEVER PLACE** child in the stroller upside down or backwards. Child should always be sitting up and facing forward.



**WARNING** Always use the crotch strap in combination with the waist belt.



**WARNING** Before your first use of the Origami Stroller, make sure the Seat Ring is properly attached to the Origami Base. The seat ring should only be assembled by an adult. Before each use, make sure the seat lock pins are properly secured.

When using the seat ring, make sure your child is securely fastened with the Safety Harness every time you use the stroller. The seat ring is for children at least 6 months old or able to sit up on their own. The seat ring's weight limit is 40 lbs (18 kgs). Do not use the seat ring with a child who weighs over 40 lbs.

## Chapter 3: Battery Warnings

The Origami contains a Lithium Polymer battery pack. Use only battery pack 4M-106-11-000101 or a 4moms® approved equivalent. NEVER use non-rechargeable batteries in the Origami.

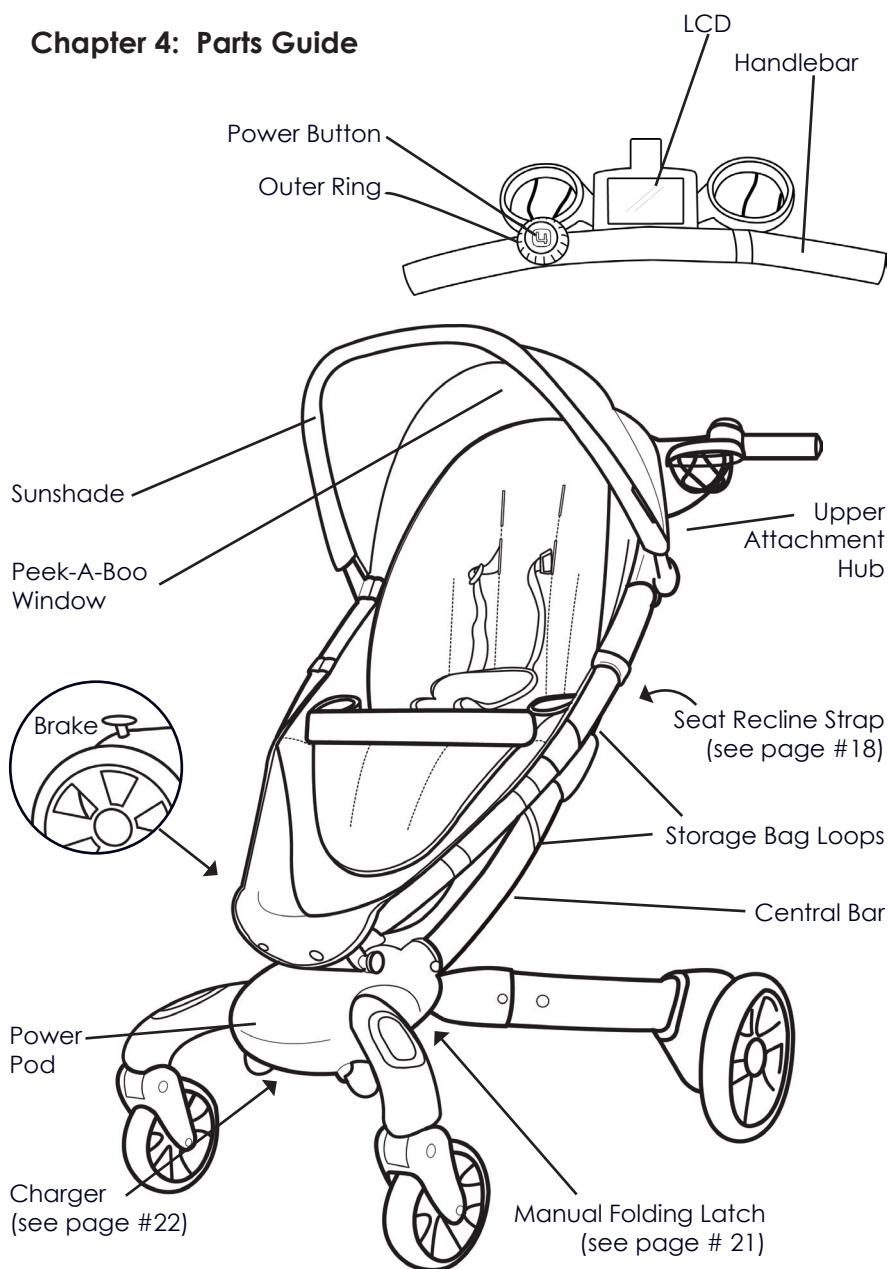
Failure to follow instructions or use of non-approved batteries could cause permanent damage to the battery and its surroundings, and cause bodily harm.

- **NEVER use anything EXCEPT a 4moms® approved power supply to charge the Origami Stroller.**
- **NEVER trickle charge, or allow to discharge below 2.5V per cell.**
- **NEVER allow metal objects to contact battery terminals.**
- **NEVER allow the battery temperature to exceed 140°F (60°C)**
- **NEVER disassemble or modify pack wiring in any way or puncture cells.**
- **NEVER place on combustible materials or leave unattended during charge.**
- **ALWAYS keep battery pack out of reach of children.**
- **ALWAYS dispose of in accordance with local laws.**
- **Remove and replace battery pack when product is stored for long periods of time or when batteries are no longer functioning properly.**

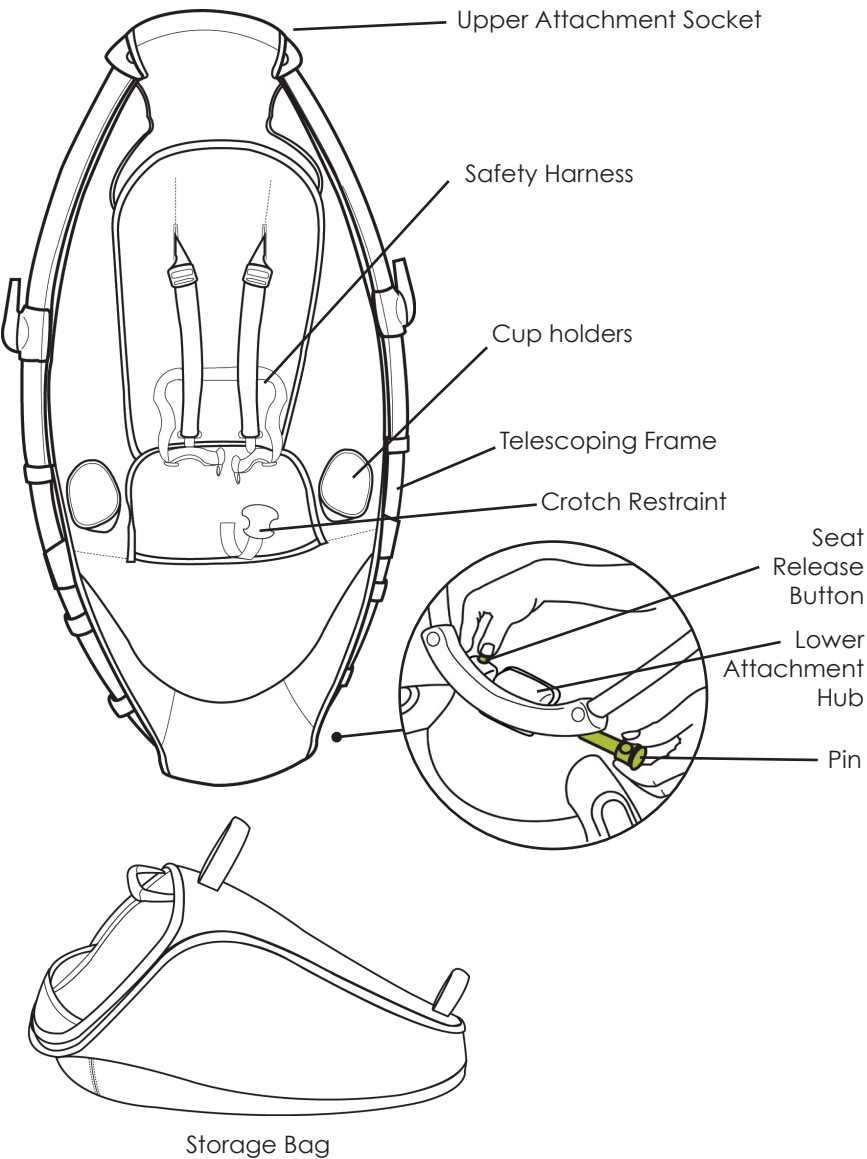




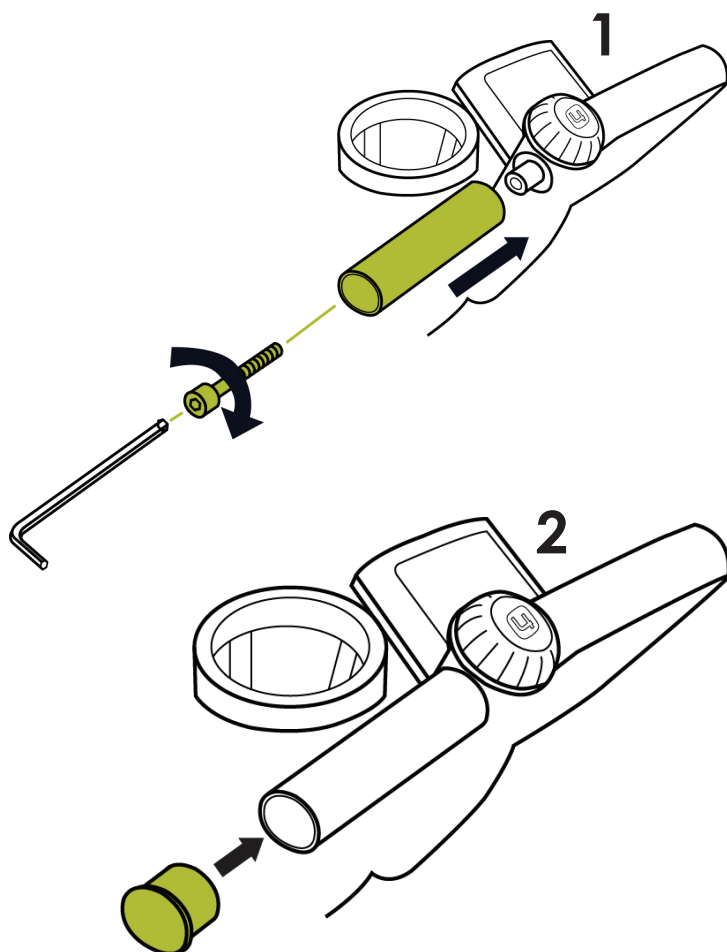
## Chapter 4: Parts Guide



# Chapter 4: Parts Guide (Seat Ring)



## Chapter 5: Installing the handlebars



## Chapter 6: Installing the Seat Ring

### Adult Assembly Required

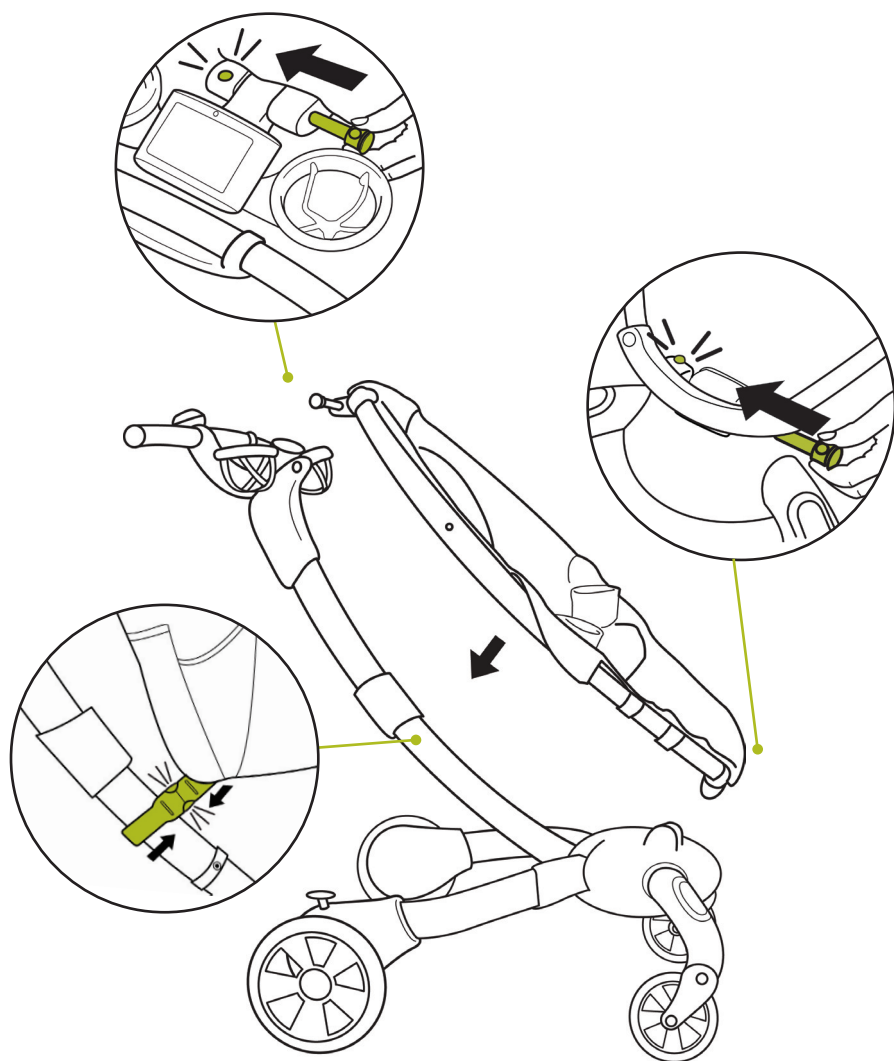
This section deals only with the installation of your included seat ring. The included seat ring is not suitable for children under 6 months of age. If installing an alternate 4moms® approved seating accessory, please see the instructions that came with the accessory.

Step 1: Unfold the base as described on page 14.

Step 2: Take the seat ring by its upper and lower ends and pull gently until the Telescoping Frame is fully extended. Fit the Upper Attachment Socket of the seat ring over the Upper Attachment Hub of the base, and push to pin into place until it clicks. Do the same on the lower end. Buckle the seat restraint strap around the Central Bar (as shown on page 13).

To detach the seat ring, depress the Release Button on each of the seat's Attachment Sockets, and pull each pin out as far as it will go.

Note: The seat ring can also be attached to and detached from the Origami base when both the base and the seat ring are closed, but it's harder to do, so we recommend attaching and detaching when both pieces are fully open.

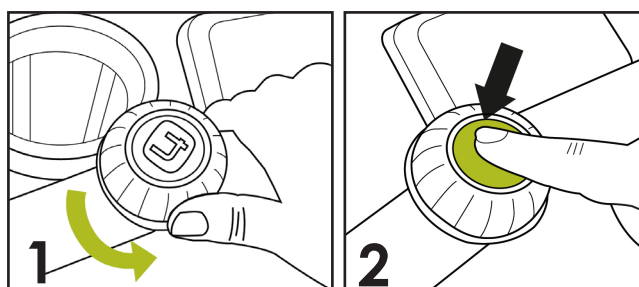


## Chapter 7: Using Your Origami

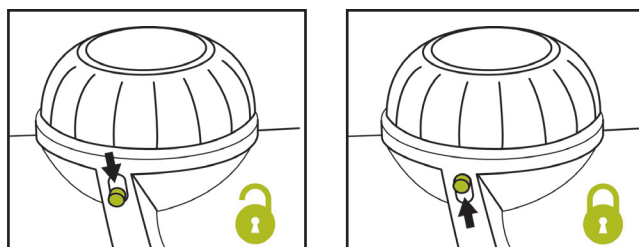
### How to Power Fold and Unfold

To fold or unfold the Origami, turn the Outer Ring of the Activation Dial counterclockwise until it won't go any further, then release it. The dial will light up for 5 seconds. While this button is lit, press the Power Button and the stroller will fold or unfold.

**If you press the Power Button while the dial isn't lit, nothing will happen. The two-step process prevents someone from folding the stroller unintentionally.**



There is a lock switch located at the base of the Activation Dial (shown below). Slide the switch up to lock the dial and down to unlock it.



## Chapter 8: Securing Your Child in Seat Ring

This section deals only with the installation of your included seat ring. The included seat ring is not suitable for children under 6 months of age. If installing an alternate 4moms® approve seating accessory, please see the instructions that came with the accessory.

Place your child in the Origami. Position the crotch restraint between your child's legs.

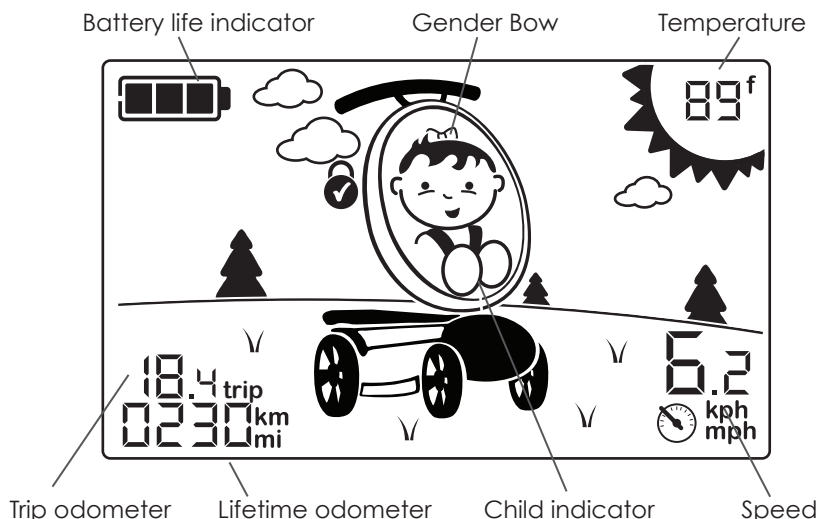
Buckle both shoulder straps into the buckle on the lower strap.

Check to be sure the Safety Harness is securely fastened by pulling it away from your child. The Safety Harness should remain attached.

To tighten the straps: Feed the anchored end of the strap up through the buckle to form a loop. Pull the free end of the restraint.

To loosen the straps: Feed the free end of the restraint up through the buckle to form a loop. Enlarge the loop by pulling on the end of the loop toward the buckle. Pull the anchored end of the restraint to shorten the free end of the belt.

## Chapter 9: The LCD



	Central bar latches are engaged and stroller is safe to use
	Latches are not engaged; stroller is not safe to use
<b>error</b>	Something is wrong; stroller is not safe to use. Discontinue use and contact Customer Service

The LCD is backlit at night. To dim the backlight, see Chapter 10.

The trip odometer resets to zero every time you close the stroller, but the lifetime odometer remembers all distance traveled. If on your first trip, you travel .5 miles and then close the stroller, both odometers will show 0 when you open the stroller again. If you then travel another .5 miles, the lifetime odometer will show 0001 miles.

### Changing Gender Bow and Units

Turn and hold the Activation Dial until light turns off, then release. Turn and release the dial to toggle between bow/no bow, and press the button to select. Then use the dial to toggle between standard/metric units, and press the button to select.



## Chapter 10: Lights

The Daytime Running Lights on the stroller's legs will come on when the stroller is opened, and will turn off again after 3 minutes of no movement. After 10 seconds of movement, they will come back on. They will turn off when the stroller is closed.

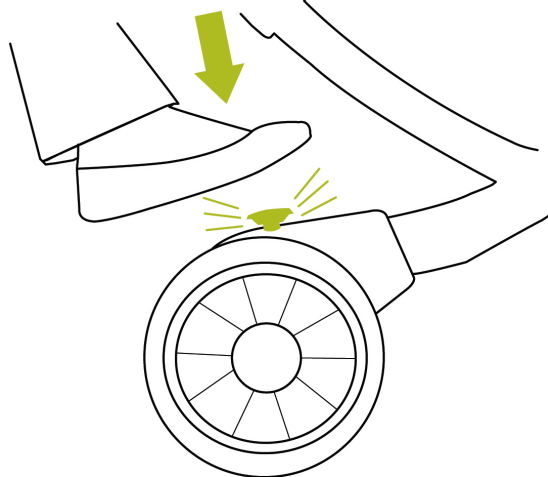
The Pathway Lights on the Power Pod are triggered by a light sensor near the LCD. When the environment around the stroller gets dark, the Pathway Lights come on automatically, and turn off automatically when the environment lightens.

To adjust the running lights and LCD backlight, press the orange Power button to switch from full brightness to low brightness to off.

## Chapter 11: Using the Brakes

To lock the brakes, push down on the Brake until you hear a click. This will lock both wheels. To unlock the brakes, push down on the Brake again. It will click and unlock both wheels. (It's like clicking a ballpoint pen.)

**WARNING:** Always use brakes when parking the stroller. Brakes should only be engaged when the stroller is stopped. Never rely solely on the brakes when stroller is on an incline.

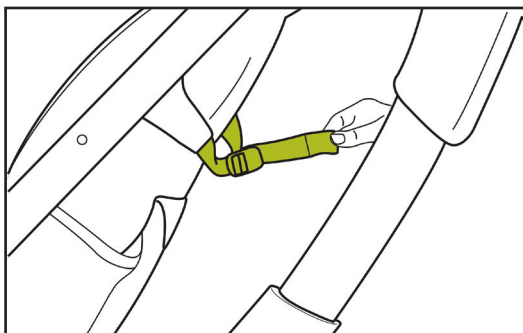


## Chapter 12: Seat Recline and Storage Bag

To recline the Origami's seat to its fullest extent, loosen the Seat Recline Strap and push the seat towards the Central Bar. To put the seat in a position between fully reclined and fully upright, leave the Seat Recline Strap buckled and adjust the length of the strap.

To tighten the strap: Feed the anchored end of the strap up through the buckle to form a loop. Pull the free end of the restraint.

To loosen the strap: Feed the free end of the restraint up through the buckle to form a loop. Pull the anchored end of the restraint.



**WARNING** TO PREVENT A HAZARDOUS, UNSTABLE CONDITION, never place purses, shopping bags, parcels or unapproved accessory items on the handle or sunshade.

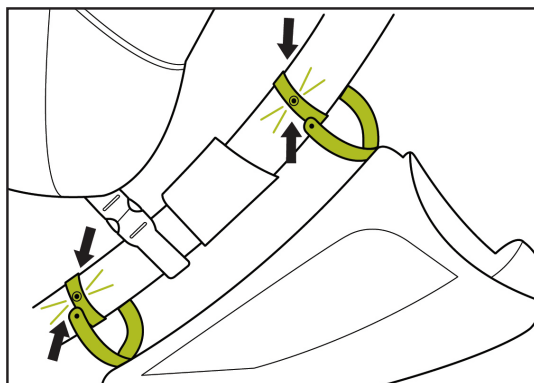
## Attaching Storage Bag

To attach the Storage Bag, snap the bag's straps into place on the Central Bar (as shown below).

The Origami will fold with the Storage Bag attached, even if the Storage Bag has items inside it. We recommend you remove fragile or glass items, or large, bulky items from the Bag before folding the Stroller.



**CAUTION:** Do not store more than 10 pounds of material in the storage bag.

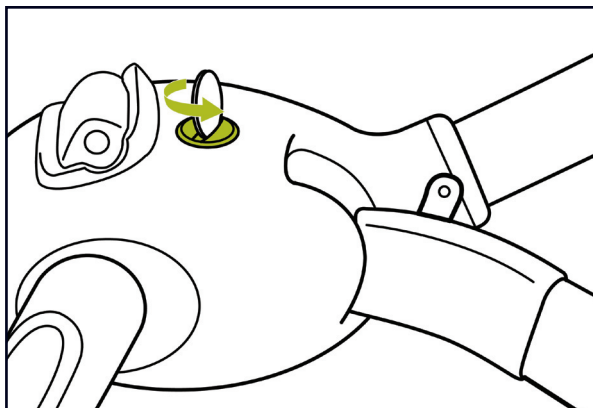


## Chapter 13: Folding the Stroller Manually

4moms® strongly recommends opening and closing the stroller using the power folding system. However if the battery doesn't have sufficient power or you experience some other unforeseen issue, the stroller can be opened and closed manually. If you experience any issue other than the battery not being sufficiently charged, please contact Customer Service as soon as possible.

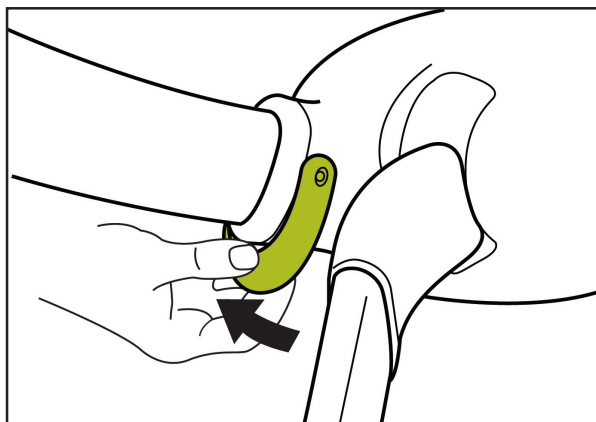
Before opening or closing the stroller manually, you must first put it into Manual Mode.

Locate the Manual Override Switch on the top of the Power Pod (Picture). Insert a large coin into the slot and turn it 90 degrees clockwise. This will put the stroller in manual mode and turn off electrical power to the stroller.



**To Open or Close the Origami Manually**  
Once the stroller is in Manual Mode, push the Manual Folding Latch release button and lift the Latch lever. Open or close the stroller by sliding the Central Bar a few inches, release the Latch and slide the Central Bar until it clicks.

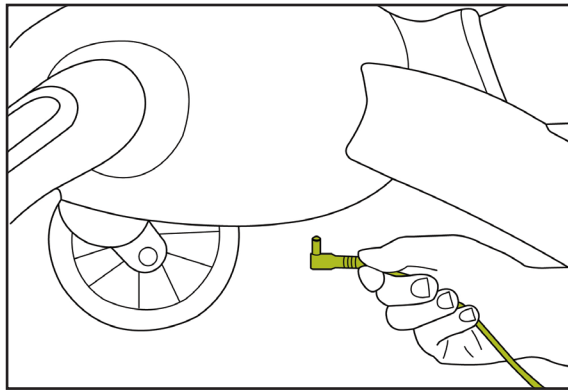
To return to Power Mode, turn the coin counterclockwise and remove.



## Chapter 14: Charging the Battery Manually

The Origami is equipped with an on-board generator to charge its battery whenever you are pushing the stroller. The battery life of a fully charged Origami is 100 open-and-close cycles, or several months in a static position.

If you wish to charge the battery manually, plug the small end of the Charger into the outlet on the bottom of the Power Pod, then insert the plug end of the Charger into a wall outlet.



## Chapter 15: Maintaining Your Origami

### **Wheels and Power Pod**

The Origami is designed to handle many types of ground and rough terrain. However, to keep the stroller in peak condition, keep the wheel bearings free of sand and abrasive grit, and wipe water off the Power Pod after use. Do not submerge any part the stroller or use running water to clean it.

### **Battery**

Extremely low temperatures can decrease the battery life of the Origami, or prevent the battery from working at all. We recommend you not store the Origami below freezing temperatures, or use it in temperatures of less than zero degrees.

### **Frame**

To clean the plastic parts or aluminum parts of the Origami, wipe with a solution of mild soap and water. Do not use bleach. Keep the Handlebar, Central Bar, and seat ring frame free of sand and abrasive grit. Avoid getting oil or lubricants on the plastic parts, as this can chemically degrade the plastic.

### **Storage Bag and Seat Insert**

The Storage Bag and Seat Insert are machine washable.

To remove the Seat Insert, unbuckle the Safety Harness. Unbuckle the shoulder straps from the back of the Origami seat, and slide them out of the seat insert. Undo the snap inside the crotch restraint sleeve and slide that buckle out of the seat insert, then remove the insert.

## Chapter 16: Troubleshooting

Issue	Action
The LCD is off.	<p>The stroller will automatically go into power-saving mode after a few minutes sitting still. Push it forward or turn the Activation Dial slightly to wake it up.</p> <p>-The stroller's power will be completely off when in Manual Mode. See Chapter 13 for instructions to return it to Power Mode.</p> <p>-If the battery is very low, the stroller will turn off, but will turn on when pushed. Please charge the battery using the included AC adaptor.</p>
I turned the Activation Dial and pushed the Power button, but the Origami didn't open or close.	<p>-On rare occasions, you may simply need to turn the dial and press the button twice. If that doesn't work:</p> <p>-Put the stroller into Manual Mode, then back to Power Mode (see Chap. 13) to reset the system.</p> <p>-If this problem continues, please contact customer service.</p>
My LCD says "ERROR" on it.	<p>Discontinue use and contact customer service. There will be some numbers in the trip and lifetime odometers - please have these available when calling.</p>
Can I turn the stroller completely off?	<p>Putting the stroller in Manual Mode will turn off all power to the system.</p>



## Chapter 16: Troubleshooting

Issue	Action
The stroller looks open, but the unlocked icon is showing.	<p>The stroller is not fully latched. Please close and open it again.</p> <p>If this problem continues, discontinue use and contact customer service.</p>
When I tried to close (or open) the stroller, it stopped and backed up a little.	<p>For safety, the Origami will stop folding automatically when it encounters an obstruction. Remove any obstructions to the stroller's opening or closing and try again.</p> <p>If this problem continues, discontinue use and contact customer service.</p>
When I'm walking, I don't see the battery icon cycling.	Please contact customer service.
I'm trying to switch the stroller into Manual Mode and I can't turn the switch.	<p>Make sure you're turning the switch clockwise. You may need to lift the Manual Release Latch or push up slightly on the Central Bar in order to engage the manual release. If this problem continues, contact customer service.</p>
The LCD says Manual, but I've turned it back to Power Mode. What do I do?	<p>If the LCD is turned on, you've turned the stroller back into automatic mode, when you open and close the stroller, it will clear from manual mode. If this continues to occur, please discontinue use of the stroller and contact customer service.</p>

## Chapter 17: Warranty

4moms, LLC warrants to the original purchaser of every new 4moms Origami® that the unit will be free from defects in material and workmanship, under normal and proper use as specified by 4moms, LLC and upon proper usage in accordance with the instruction manual supplied with each Origami® unit. 4moms, LLC obligation under this warranty is limited to a period of twenty-four (24) months from the date of purchase. If the unit is determined by 4moms, LLC to have been defective within twenty-four (24) months of purchase, it is limited to the repair or replacement of the unit, including labor charges, or defective parts or assemblies. The warranty shall include standard labor charges and applicable parts as determined by 4moms. 4moms, LLC assumes no liability for parts or labor coverage for component failure or other damage to the unit resulting from improper usage or failure to clean and/or maintain product as set forth in the warranty provided with the unit. Removal or modification of any part of the unit not listed in this manual (or delineated in the manual of a 4moms® approved accessory) shall render this warranty null and void.

## Chapter 18: Registration

While 4moms, LLC does extensive testing above and beyond that required by law, if through some unforeseen circumstance we need to issue a recall, we ask that you please register your Origami®. We have 2 easy ways to register: either fill out the enclosed registration card or register online at [www.4moms.com](http://www.4moms.com).

## Chapter 19: Compliance

This device complies with part 15 of the FCC Rules. Operation is subject to the following two conditions: (1) This device may not cause harmful interference, and (2) this device must accept any interference received, including interference that may cause undesired operation.

**Warning:** Changes or modifications to this unit not expressly approved by Thorley Industries, LLC d/b/a 4moms could void the user's authority to operate the equipment.

**Note:** This equipment has been tested and found to comply with the limits for a Class B digital device, pursuant to part 15 of the FCC Rules. These limits are designed to provide reasonable protection against harmful interference in a residential installation. This equipment generates, uses and can radiate radio frequency energy and, if not installed and used in accordance with the instructions, may cause harmful interference to radio communications. However, there is no guarantee that interference will not occur in a particular installation. If this equipment does cause harmful interference to radio or television reception, which can be determined by turning the equipment off and on, the user is encouraged to try to correct the interference by one or more of the following measures:

- Reorient or relocate the receiving antenna.
- Increase the separation between the equipment and receiver
- Connect the equipment into an outlet on a circuit different from that to which the receiver is connected.
- Consult the dealer or an experienced radio/TV technician for help.

This Class B digital apparatus complies with Canadian ICES-003.



Thorley Industries, LLC d/b/a 4moms  
40 24<sup>th</sup> Street, 3<sup>rd</sup> Floor  
Pittsburgh, PA 15222  
[www.4moms.com](http://www.4moms.com)  
1-888-614-6667

© 2011 Thorley Industries, LLC. All Rights Reserved.  
U.S. and International Patents Pending  
Origami™, 4moms®, and the 4moms® logo are  
trademarks of Thorley Industries, LLC.

North American Booklet  
4M-106-14-000102